

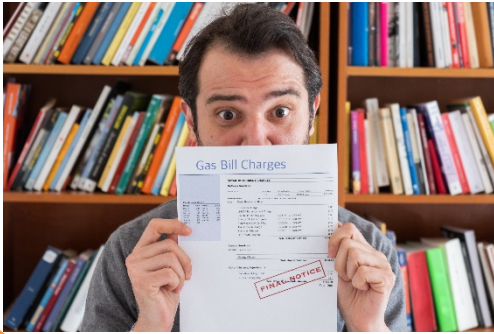
Save Money, Cut Carbon, Keep Warm



Find out how you can save money on your energy bills, go green and do your bit for the environment.

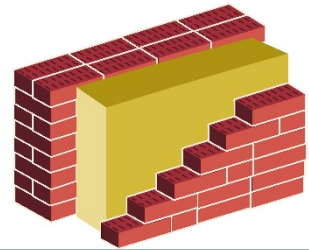


Did you know?



Three out of four households in the UK could save an average of £300 on their energy bills each year by switching energy supplier or energy tariffs.

Energy efficiency measures such as home insulation could reduce your energy bill by a quarter.



Winter deaths in the UK are almost 3 times higher in cold homes than in warm homes.

40% of the UK's carbon emissions come from households. Reducing home carbon emissions is important to tackle climate change.



This booklet will let you know about....



How you can switch energy suppliers and save money.



Support for those that need it the most with saving energy and paying energy bills.



Local action for energy to cost less to us and the environment.



Tips and support on energy efficiency.



Switch and Save!

The easiest way to save money on your energy bills is to switch energy suppliers or energy tariffs.

Three out of four households in the UK could save an average of £300 on their energy bills each year by switching energy supplier or energy tariffs.

Unless you review your tariff or switch suppliers at the end of your contract you will probably be paying more than you need to.

Once you have let a new supplier know you want to switch to them there is nothing more you need to do and nobody will need to call at your home.

There are many 'green' energy tariffs available, many of which are amongst the cheapest on the market.



Switching Suppliers Is Easy

It should take around 15 minutes!

You need to have your energy bill with you that shows how much energy you use in one year, your energy supplier and name of your energy tariff.

The easiest way to switch energy suppliers is to use an Ofgem approved website. There is a guide to 'Switch energy suppliers and shop for a better deal' at: www.ofgem.gov.uk/consumers/energy-guides



If you don't have access to the internet or you would prefer to switch over the phone the Citizen's Advice Consumer Helpline can help you. Call: 03454 04 05 06

Things to check when you switch

Is the tariff fixed or variable? A fixed tariff will ensure that your rates stay the same over the duration of the agreement.

Do you have to pay an exit fee? This could be around £25-£35 per fuel. You should factor the exit fee into the savings you will make.

Do you receive the Warm Home Discount? If so, check that your new supplier will give you the discount or make sure your saving from switching is more than the discount.

Are you entitled to support with energy bills and services?

If you claim benefits or are on a low income you may be entitled to support with paying your energy bills and making your home more energy efficient.

Warm Home Discount



The Warm Home Discount is an annual payment for people who need help the most. It could give you £140 discount per year on your energy bill.

Only the larger energy companies provide the discount. You need to contact your supplier directly to apply.

Help with energy efficiency

The government's ECO initiative can provide funding for energy efficiency improvements such as insulation if you are on a low income and receive specific benefits. You need to buy your energy from certain suppliers to get the funding and contact your supplier directly to apply.

Find out more at:
www.ofgem.gov.uk/environmental-programmes/eco

Or call Simple Energy Advice on 0800 44 42 02





If you live in East Sussex, are on a low income or receive certain benefits the 'Keep warm and well' service could help you. You could get a free warm home check, energy advice and funding for minor measures in your home such as draught proofing and boiler repairs. Emergency temporary heating is also available.

Find out more at:
www.warmeastsussex.org.uk
or call the Citizens Advice
Adviceline on 03444 11 14 44

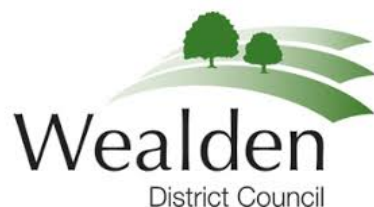
Priority Services

Priority Services are available to give extra support to those who need it most if you experience a power cut. You can also get advice on energy bills and energy saving.

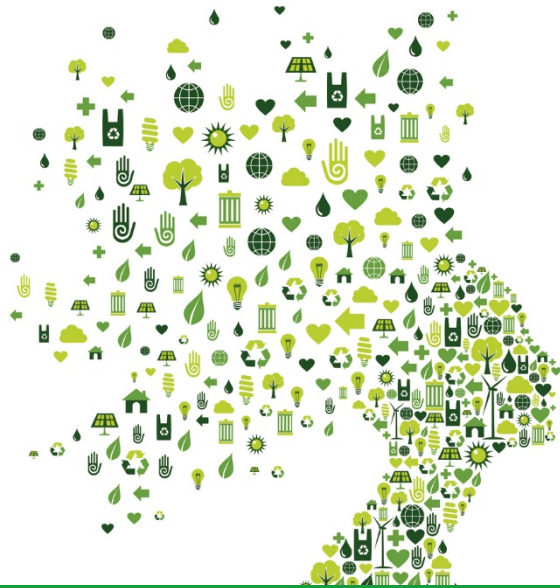
Register online at:
[www.ukpowernetworks.co.uk/
power-cut](http://www.ukpowernetworks.co.uk/power-cut)
Or call: 0800 31 63 105



Enter your postcode on the Simple Energy Advice website to find out about home energy saving grants in your area:
www.simpleenergyadvice.org.uk/grants
Or call:
0800 44 42 02



Wealden District Council is offering winter fuel vouchers and funding for home insulation for those most in need. For more information call:
01323 44 33 22



forest row
energy

Energy that costs
less to **US** and the
environment

East Grinstead - Ashurst Wood - Turners Hill - Sharpthorne - Forest Row
Hartfield - Danehill - Nutley - Crowborough - Uckfield

We are a community energy, not for profit co-operative
with a vision to build a self-sufficient, energy efficient
local community that is powered by renewable energy.

Forest Row Energy Co-op is part of the national network of
community energy co-operatives that are putting the power of
energy back in the hands of our local communities.

We are run by industry experts with a passion to make a
difference locally. We secure funding to deliver renewable energy,
energy efficiency and energy advice projects. We offer renewable
energy feasibility studies and consultancy for our community.

Please join us on our website to have a say in how the co-op is
run and to support our work.

www.forestrowenergy.com

info@forestrowenergy.com

How can Forest Row Energy help you... and our environment?



At home....

We can project manage your renewable energy and energy efficiency projects.

We can refer you to solar PV suppliers that we recommend.

We apply for funding that could give you free support for installing renewable energy at home.

Be part of the change!

By joining Forest Row Energy you will be part of positive local action on climate change. We welcome volunteers and new members.

Feasibility Studies

We can apply for government funding to undertake feasibility studies for larger renewable energy projects such as those at schools, colleges and community buildings with a high energy use.

For businesses..

We offer corporate membership for local business that gives reduced cost consultancy to kick start renewable energy projects - like the solar PV at The Seasons



Quick tips to save energy and money

Start by making sure your loft is well insulated. This is likely to be the most cost effective way to reduce heat loss in your home by up to a quarter.



Next think about wall insulation. Cavity walls are easiest to insulate but even a solid wall can be insulated. If your walls are not insulated about a third of your heat will be lost.



Go renewable. Once you have a well insulated home investing in renewable heating such as heat pumps will make some big savings.



Say goodbye to single glazing. Double glazing can reduce heat losses in your home by another quarter.

The Green Deal

The Green Deal is government initiative for homeowners. It could give you a loan for energy efficiency improvements such as insulation and double glazing. You pay this back according to the savings you make on your energy bills. If you move home, the loan stays with the property. Find out more at:

<https://www.gov.uk/green-deal-energy-saving-measures>

Or call Simple Energy Advice: 0800 44 42 02





Find out more about our work and join us to build a self-sufficient, energy efficient community that is powered by renewable energy at:

www.forestrowenergy.com

Useful advice and support

Citizen's Advice Consumer Helpline – Advice and support on paying energy bills and switching energy supplier:
www.citizensadvice.org.uk/consumer/energy
Consumer helpline: 03454 04 05 06

Simple Energy Advice – Bespoke energy advice and support including grants and financial support:
www.simpleenergyadvice.org.uk
0800 444 202

Ofgem – Household gas and electricity guide:
www.ofgem.gov.uk/consumers/household-gas-and-electricity-guide

Energy Saving Trust - Renewable energy and energy saving advice: www.energysavingtrust.org.uk



This booklet has been produced by Forest Row Energy Co-op as part of it's 'Power Partners' project, funded by UK Power Networks.

As part of this project Forest Row Energy is offering energy advice talks, 1-2-1 advice sessions and training for people who work with vulnerable groups so that they can save money, keep warm and reduce their carbon footprint.

If you would like to receive a free advice session, book us to come along to a local group and give a talk or train people who work with vulnerable groups please email:

energyadvice@forestrowenergy.com